



W WESTWOODLEBER

W WESTWOODLEBER
LET US GUIDE YOU HOME

Crooked Way, Nazeing, Waltham Abbey, EN9 2LE
£675,000



Crooked Way, Nazeing, Waltham Abbey, EN9 2LE

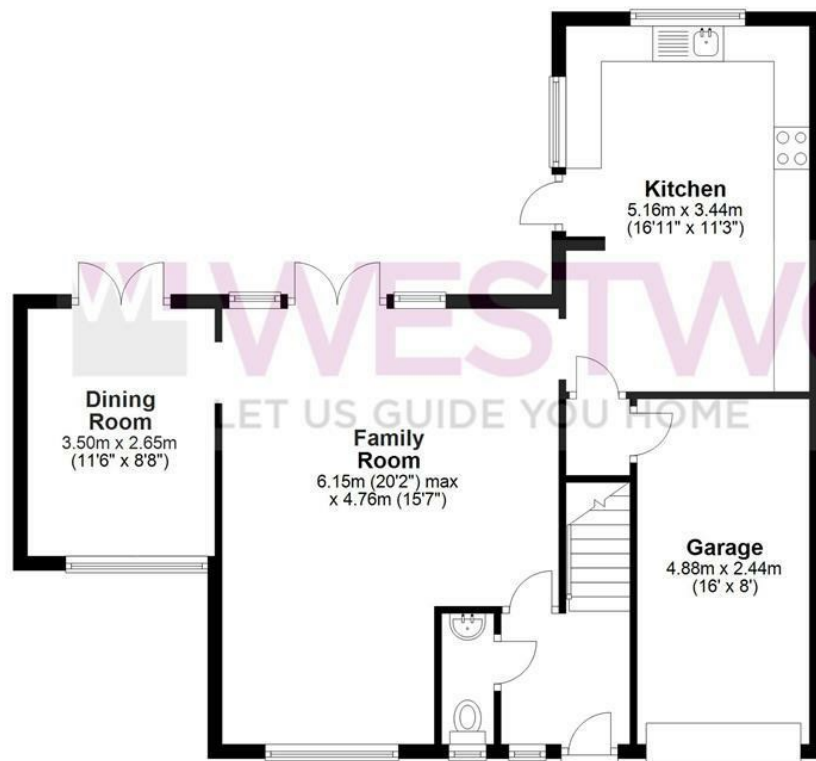
Westwood Leber are delighted to bring to the market this fantastic four bedroom detached family home offering exceptional accommodation throughout. The property has versatile living space that includes a spacious lounge and family room, large kitchen and separate dining room, a ground floor cloakroom, a first floor family bathroom, three double bedrooms and further master bedroom suite with a large en-suite bath and shower room. Further benefits include a large driveway, an integral garage with access inside the property and a well landscaped, south facing rear garden. Internal viewing is highly recommended!



 WESTWOODLEBER

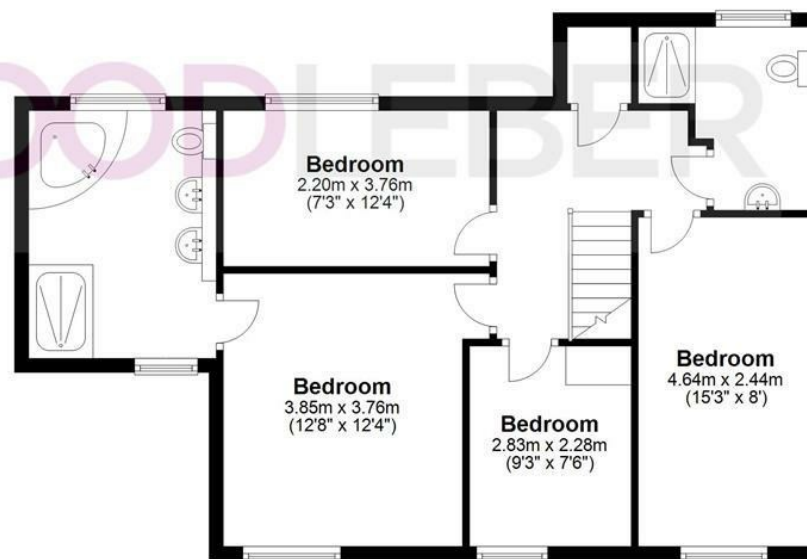
Ground Floor

Approx. 74.4 sq. metres (800.5 sq. feet)



First Floor

Approx. 64.7 sq. metres (696.6 sq. feet)



Total area: approx. 139.1 sq. metres (1497.1 sq. feet)

FOR ILLUSTRATIVE PURPOSES ONLY. NOT TO SCALE. Whilst every attempt had been made to ensure the accuracy of the floor plan shown, all measurements, positioning, fixtures, features, fittings and any other data shown are an approximate interpretation for illustrative purposes only and are not to scale. No responsibility is taken for any error, omission, misstatement or use of data shown. Property marketing provided by Westwood Leber.
Plan produced using PlanUp.







WESTWOODLEBER



WESTWOODLEBER



WESTWOODLEBER



WESTWOODLEBER



